

**An exhibition of sixteen drawings, watercolours & etchings
mainly of south-east England in the 1920s**

by H. J. Williams

These drawings are subtle and yet strong, the artist's ability to make the viewer feel the dampness of an early morning mist or an evening woodland walk with a pencil or brush is remarkable. They are unframed and priced accordingly, we are pleased to post them to you at cost. For further details email james@artantiquesappraisals.com or ring 07799307437





1.

Keston, Kent

Pencil & wash
inscribed and dated Aug 20, '22
6.5 x 7.2ins (16.8 x 18cm)

mounted on toned paper
overall size 8 x 8.2ins (20.2 x 20.4cm)



£65



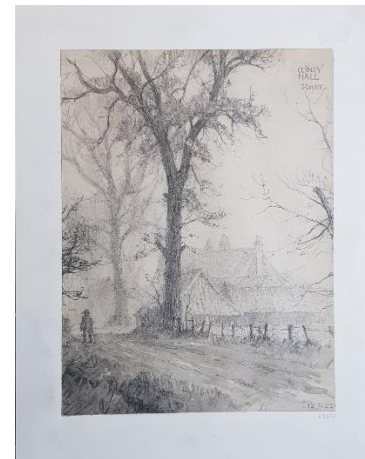
2.

Coney Hall, Hayes

Pencil, inscribed with title & dated 12.11.22

Signed with initials on the mount

mounted on card, overall size 11.1 x 8.8ins (28.2 x 22.4cm)



£70



3.

On the Beach, Hastings

Pencil

4.5 x 6.2ins (11.2 x 15.25cm)

Mounted on card

overall size 6 x 7.6ins (15 x 19.2cm)



£42



4.

*Window in the ruined Church of St. Helen's,
Hastings*

Pencil and wash, inscribed as title and dated Aug. 1921

5 x 4.5ins (12.5 x 11.5cm)

mounted on coloured card

overall size 6.5 x 5.75ins (16.5 x 14.5cm)



£38



5.

An Interrupted Meal

[c.1922]

Pencil and wash

8.9 x 7.1ins (22.5 x 18cm)

Inscribed with title on card mount

overall size 23.8 x 18.8cm



£95



ON BRIGHTON BEACH

H. G. Williams '22

6.

On Brighton Beach

Etching

Signed, inscribed with title
and dated '22 in pencil

8.2 x 8.7ins (20.5 x 22.1cm)

£48



7.

West Wickham

Watercolour, signed with initials & inscribed in pencil on the mount
 4.3 x 7.2ins (10.25 x 18cm), mounted on card, overall size 5.3 x 8.7ins (13.1 x 22cm)

£58





8.

*Roman Portion of Bridge over the Stour,
Canterbury*

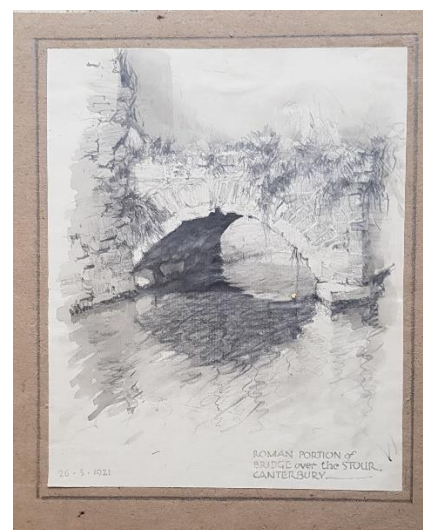
Pencil & wash

Inscribed as title and dated 26.3.1921

7.8 x 6.4ins (20 x 16.5cm)

mounted on coloured card

overall size 9.4 x 7.6ins (24 x 19.5cm)



£48



9.

Haystacks by a Farmhouse

Watercolour

Signed with initials on the mount

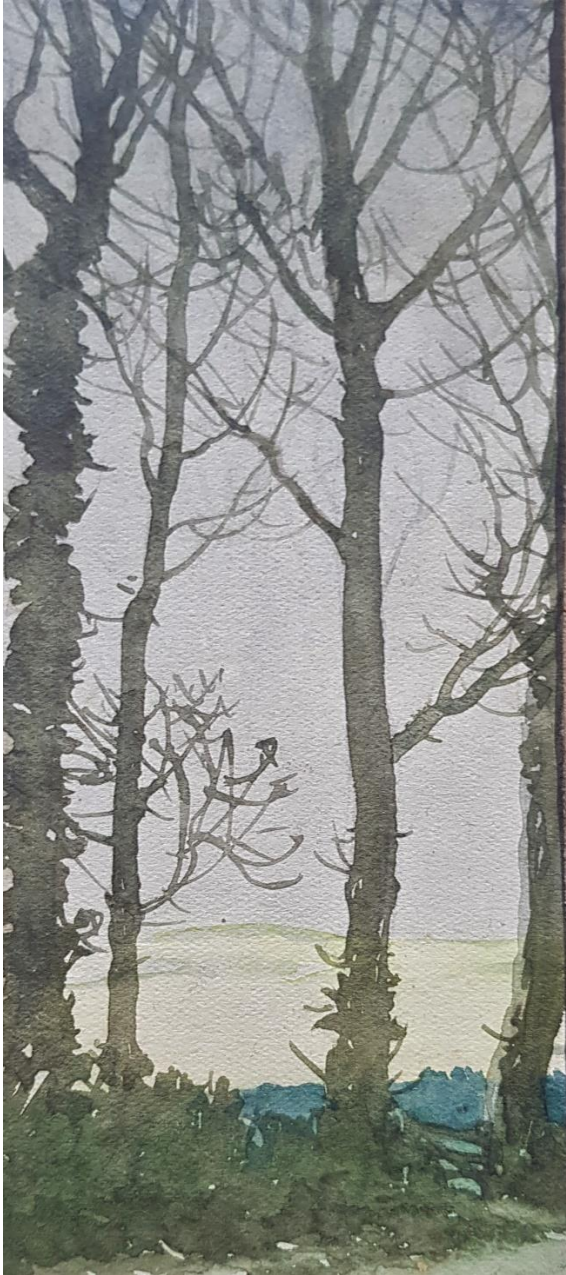
2.75 x 3.25ins (7 x 8.2cm)

Mounted on cream card (creased)

overall size 3.75 x 4.4ins (7 x 11.1cm)



£42



9.

Woodland Path

Watercolour

5.4 x 2.4ins (13.75 x 6.1cm)

mounted on coloured card

overall size 7.5 x 3.75ins (19 x 9.5cm)



£42



10.

The Diving Stage

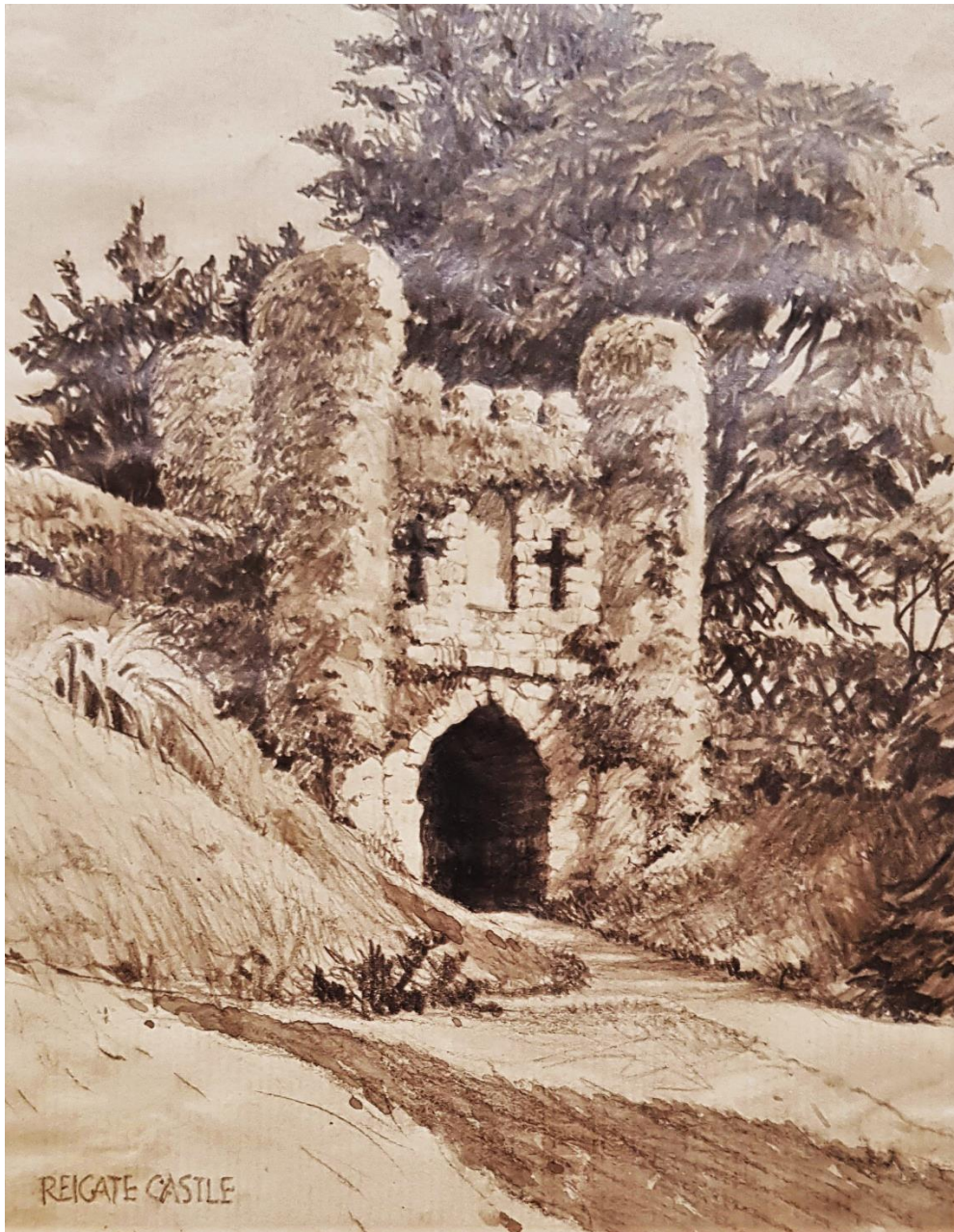
Watercolour

Octagonal 5.6ins across

mounted on cream octagonal card

overall width 6.3ins (16.2cm)

£48



11.

Reigate Castle

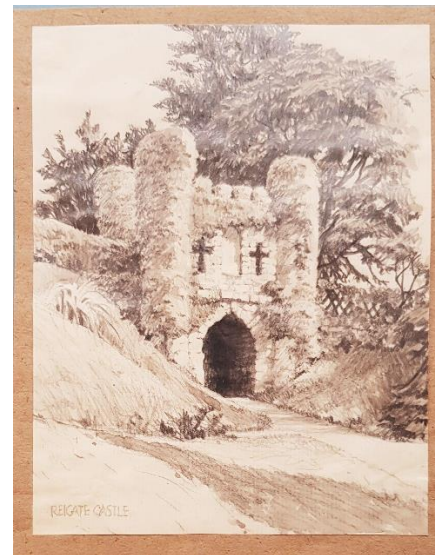
Pencil & wash

inscribed with title, lower left

6.4 x 4.8ins (16.2 x 12.1cm)

Mounted on coloured paper

overall size 6.8 x 5.4ins (17.3 x 13.7cm)



£42



12.

The Smithy - Shoreham

Aug. 14. 1921

Pencil, inscribed with title
signed on mount verso

5.75 x 5.75

Mounted on coloured card
overall size 9.8 x 9.8ins (24.8 x 24.8cm)



£58



13.

A Misty Morning

Watercolour, signed with initials and dated 1922, 6.75 x 9.5ins (17 x 24.2cm),
mounted on coloured paper, overall size 7.6 x 10.2ins (19.2 x 25.7cm)

£48





14.

One of "Millais' Oaks"
Colney Hill, Hayes, Kent

Pencil, inscribed as title and dated Oct. 30. 1921
8.5 x 6.5ins (21.5 x 16.5cm)
mounted on coloured paper
overall size 9.4 x 7.25ins (23.8 x 18.5cm)



£48



15.

Coney Hall

Christmas Eve 1922

Pencil & wash

5.25ins square

Mounted coloured on coloured paper, inscribed
with title and dated 24.12.1922

overall size 6.3 x 9.2ins (15.6 x 23.3cm)



£45



16.

Old Beeches in West Wickham Woods

Pencil & wash, inscribed as title and dated 23.9.21

7 x 6.1ins (17.8 x 15.4cm)

mounted on coloured paper

overall size 9.75 x 8.3ins (24.8 x 21.1cm)



£38

For further information, or to make a purchase email james@artantiquesappraisals.com or ring 07799307437